



Chapter N° 10

Sarphatistraat 33/35

The Treasury

The Collection

INC.

Amsterdam





Explore The Collection



The office space is evolving. Increasingly, organisations will opt for secure, flexible offices – buildings that foster a sense of destination and community, in which employees can flourish and focus. The future of work will be facilitated by technology.

It is this set of needs that The Collection sets out to meet and surpass. Across Amsterdam's most prestigious monumental addresses, we have assembled an unprecedented network of bespoke office space replete with unparalleled amenities and a hospitality-driven experience.



The Collection is your key to high-quality, bespoke office space in the heart of Amsterdam.



As much as The Collection is a portfolio of prestige office spaces, it is a collection of brilliant minds and inspiring organisations, a place where driven personalities on a mission to make a difference can connect with like-minded people.



Sarphatistraat 33/35

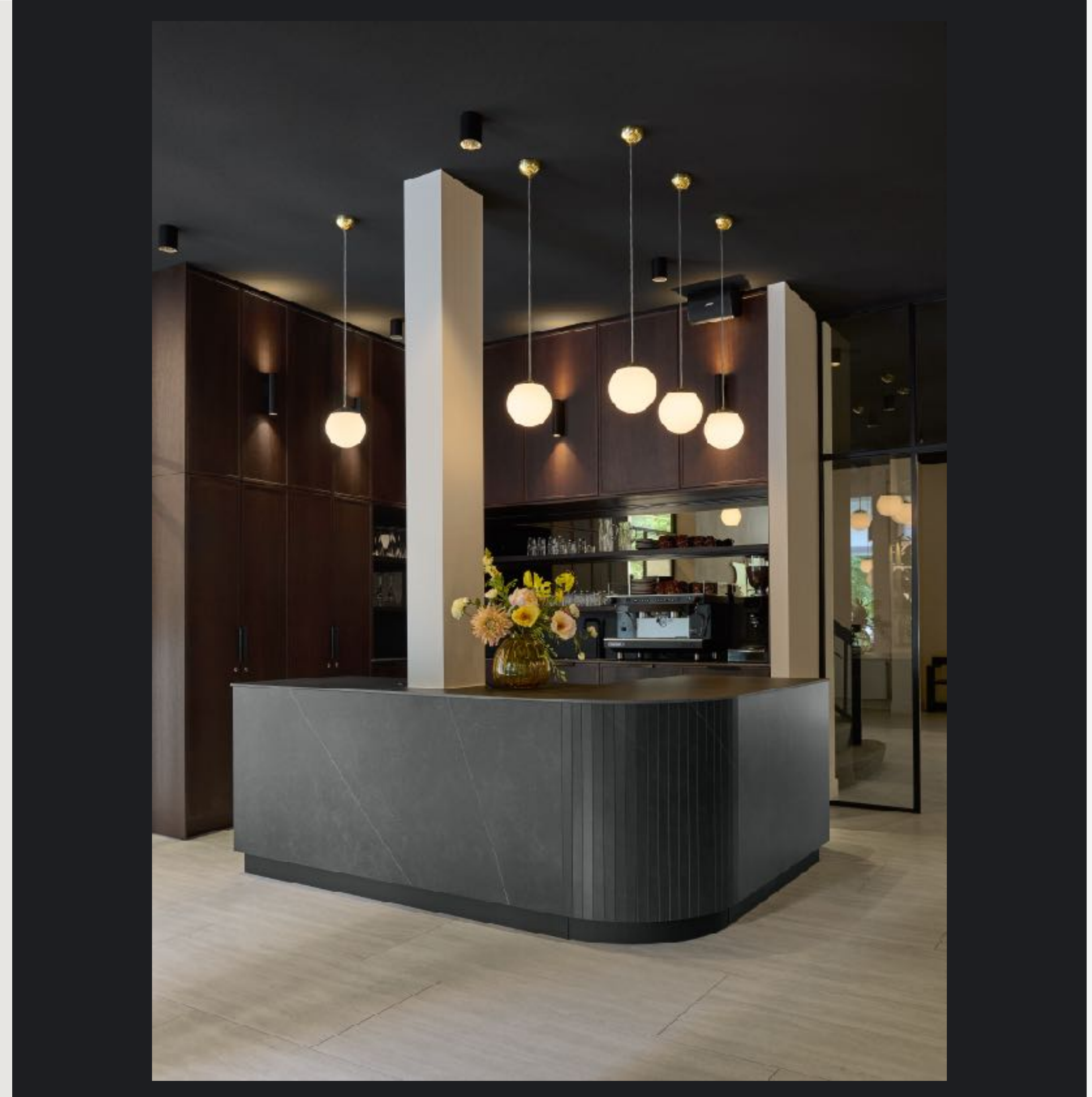
Chapter N° 10

On the stately Sarphatistraat in Amsterdam's leafy Weesperbuurt/Plantage district, Chapter No. 10 of The Collection is a modern and inspiring workspace with a rich history – literally. The Chapter is composed of adjoining houses which were merged by the famous architect Harry Elte to create the headquarters of the Real Estate Bank in 1927.

Elte's signature style – a characterful blend of the Art Nouveau, Berlage and Amsterdam schools – is typified by simple-yet-lavish sandstone façade of numbers 33 & 35, which draws full attention to the warm hues of the beautiful stratified bricks. The full-length first-floor balcony and flagpole enhance the sense of occasion.

Step inside The Treasury and you'll be surprised by a lobby that exudes something of the free atmosphere of Amsterdam in the 1970s. The gym is located in the souterrain, and is still home to the former bank's vault, where a unique treasure awaits. And with a total of 1,100m² of workspace over four upper floors connected by a quirky central staircase, Chapter N°10 provides plenty of room for all sorts of enterprise.

Boasting a distinguished waterfront neighbour in the shape of the Amstel hotel just across the street, Chapter N°10 is well served by a diverse range of restaurants and shops. The tram and metro stop next door, making it easy to reach the Amsterdam Central Station and Amsterdam Amstel hubs in five minutes. With the Amstel river flowing right past the building, you'll enjoy breath-taking views of the waters after which this city is named.





The Portfolio

As a member of The Collection you gain access to all the services & amenities across our portfolio.

Chapter N°1

Looiersgracht 43



Chapter N°2

Stadhouderskade 85



Chapter N°3

Westermarkt 2



Chapter N°4

Herengracht 433



Chapter N°5

Keizersgracht 163/167



Chapter N°6

Herengracht 134/136



Chapter N°7

Singel 151 / Spuistraat 104



Chapter N°8

Herengracht 54



Chapter N°9

Weteringschans 85



Chapter N°10

Sarphatistraat 33/35



Chapter N°11

Hoogte Kadijk 143/145



Chapter N°12

Pand Noord by The Collection





The location

The Treasury is well connected and accompanied by esteemed neighbors.

- Easily accessible location in the city center.
- Situated between the famous Amstel Hotel & Royal Theatre Carre
- View on Amstel river
- Excellent accessibility by public transport
- Metro stop "Weesperplein" is close by and takes you to Amsterdam Central Station in under 4 minutes
- Surrounded by cafe's and restaurants
- Plenty of Public car parking spaces are situated in close vicinity of the office



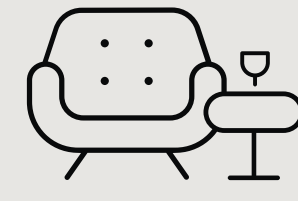
Local services & amenities

Chapter N° 10

Sarphatistraat 33/35



Concierge Services



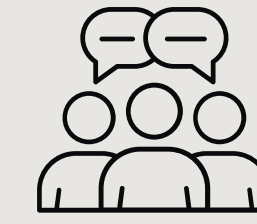
Welcoming Lobby



Coffee Bar



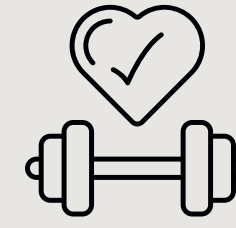
Meeting Room



Community



Shower



Gym



Personal Trainer



Mindfulness & Yoga

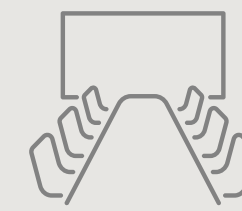
As a member of The Collection you also gain access to services & amenities of the other Chapters of The Collection



Penthouse Apartment



Game Room



Board Room



Garden



Shared E-bikes



Event Space



The Boat



A safe environment

Sarphatistraat 33/35 has been developed with a particular focus on health and safety for occupants.

- Newly installed ventilation system (with non-recirculating option)
- Windows can be opened on every floor
- Contactless entry to the building
- Staircase and elevator available, making one-way traffic possible
- Daily cleaning



Exemplary environment

To guarantee you maximum convenience as a member, The Collection has partnered with trusted specialists in order to provide you with support in three main areas.



Fit-out

Choose our high-quality The Collection fit-out package and move in as soon as you like, or engage our architect to create the perfect new environment for your business.



IT Infrastructure

Design your own custom-made IT infrastructure together with our IT specialist, or have our IT specialist set you up with our standard great connectivity in no time.

Facility management services

Enjoy the benefits of our facility management partner and opt in on all the services that you desire, such as cleaning, hospitality, security, catering and more.



Specifications



- Hospitality host
- Coffee bar
- Member lounge
- High-end meeting rooms
- Gym
- Showers

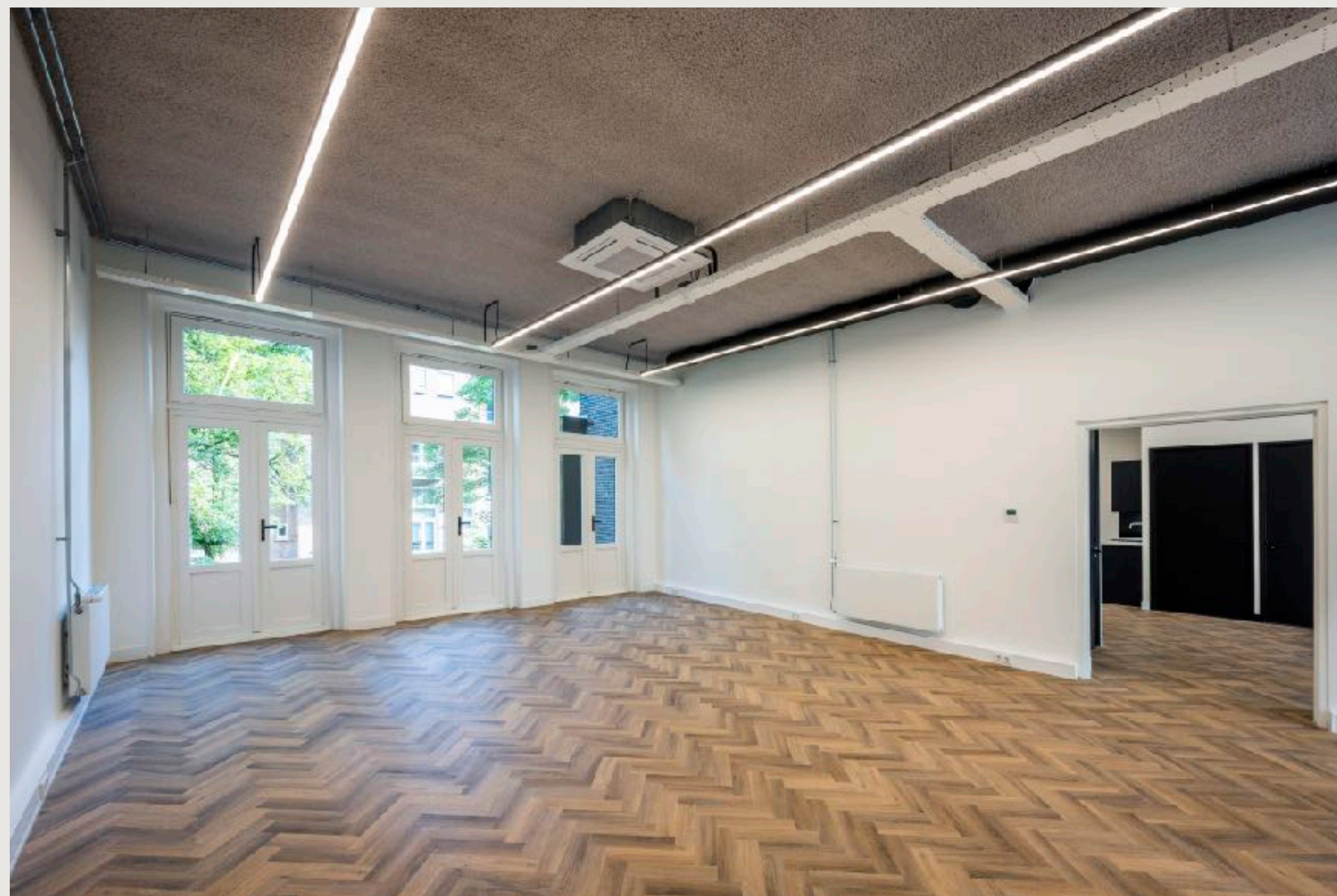


- Fully modernized climate installation
- Ventilation (100% fresh air)
- VRF cooling
- Central heating with radiators



- Fully renovated 2023
- High-specification finish
- High quality shared common areas





Lettable Floor Area

Availability

Unit 1 (1st floor)	225 sqm
Unit 2 (2nd floor)	223 sqm
Unit 3 (3rd and 4th floor)	336 sqm

TOTAL	784 sqm
--------------	----------------

The unit sizes are based on square meters lettable floor area, including a pro-rata share of the common areas.



Unit 1

225 m²





Unit 2

223 m²

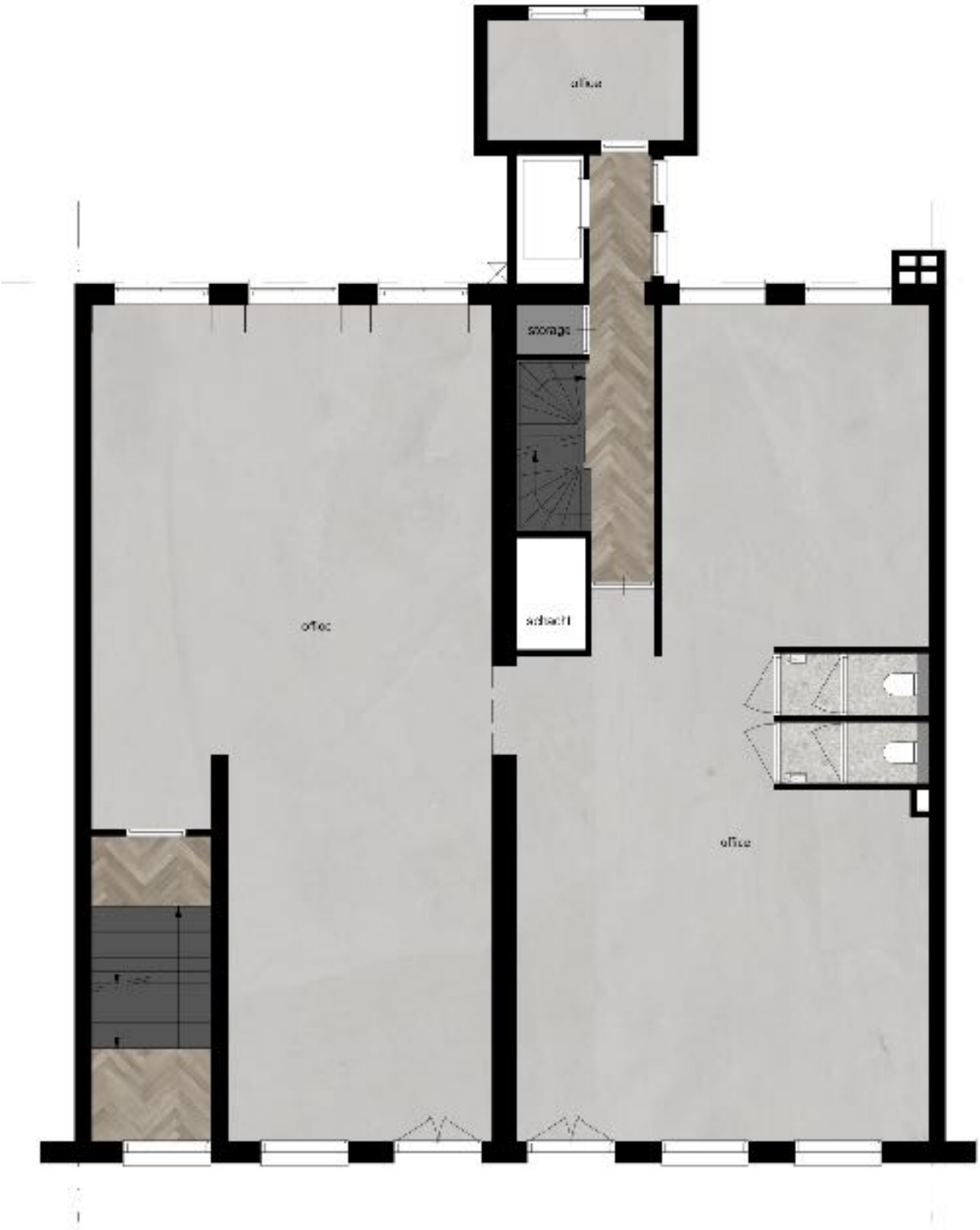




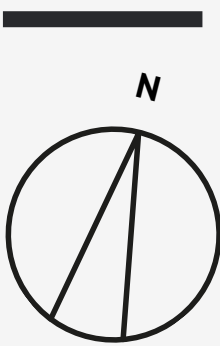
Unit 3

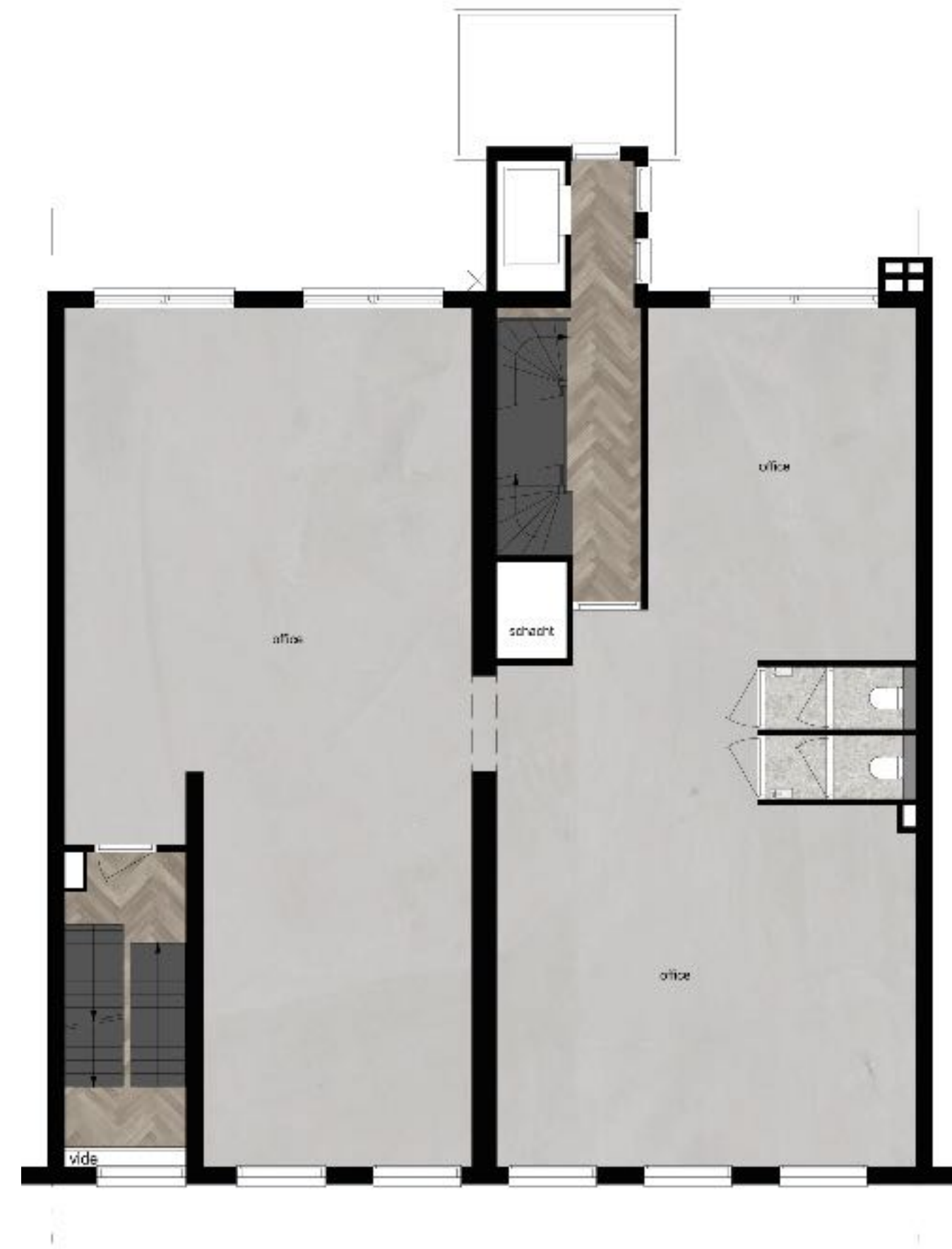
336 m²



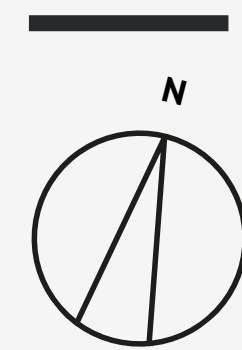


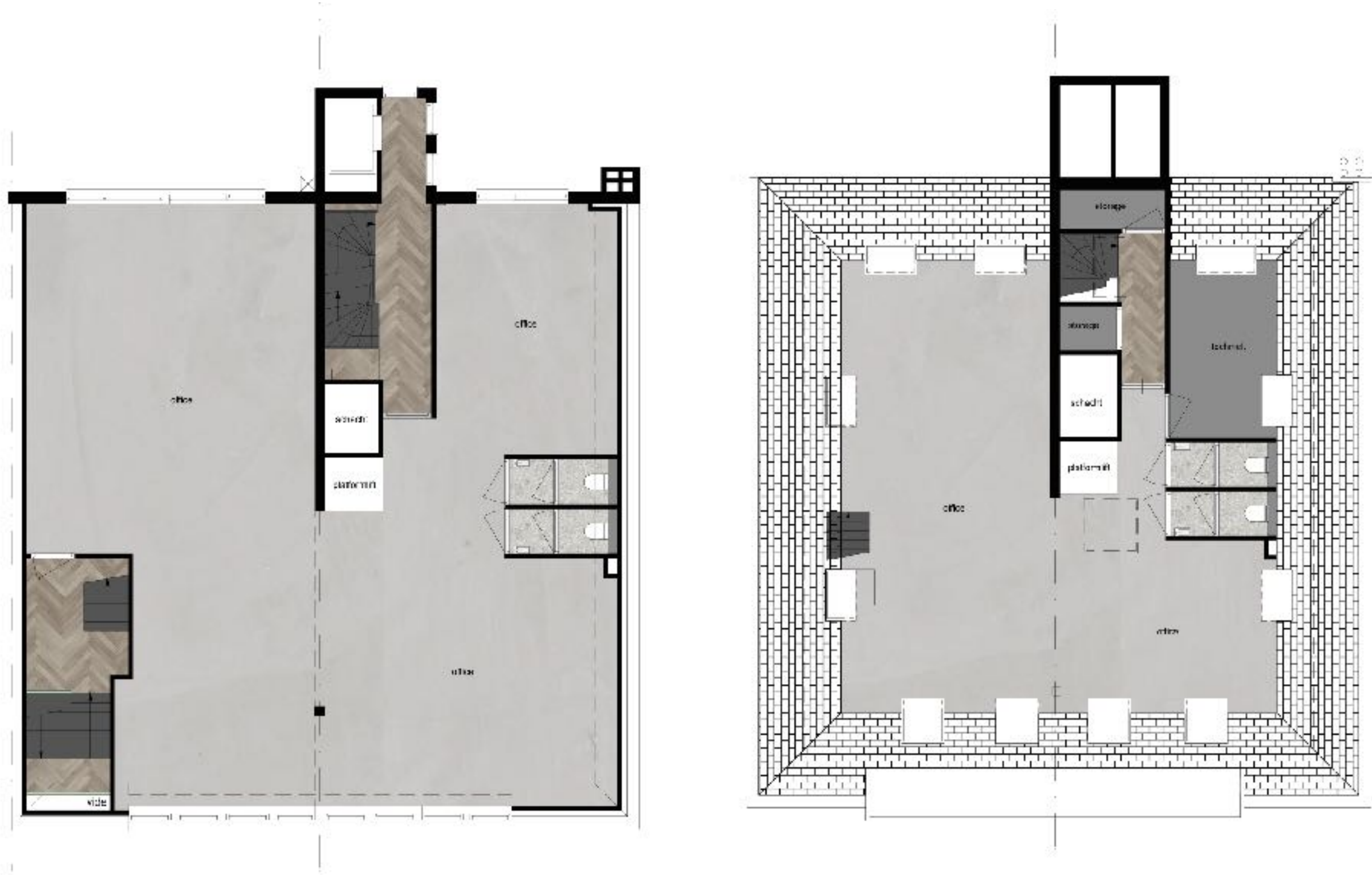
Unit 1



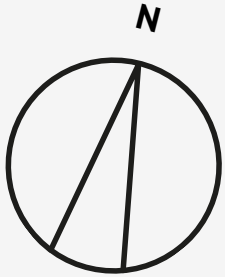
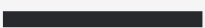


Unit 2





Unit 3





The Collection

INC.

Amsterdam

Gijsbert Witteveen
gijsbert@thecollection.inc
+31 6 11 44 10 71

thecollection.inc



Maarten Tieleman
+316 54 28 39 92

Frederique Ensink
+316 20 06 10 41